

Ashbrook

TOWNHOME CONDOMINIUMS



2 BEDROOMS 2 BATHS
From the Low \$200's

Great Location. Close to Washington Square and Easy Access to Highway 217. Amenities include Gas Heat & Hot Water, Gas Fireplace, Island Kitchens with Tile Counters & Hardwood Floors, Tile Floors in Bathrooms, Tile Counters in Master Bath & Window Blinds – many designer touches!

For More Information Call:

(503) 443-2150

www.ashbrooktownhomes.com



The Ryness Company,
Oregon

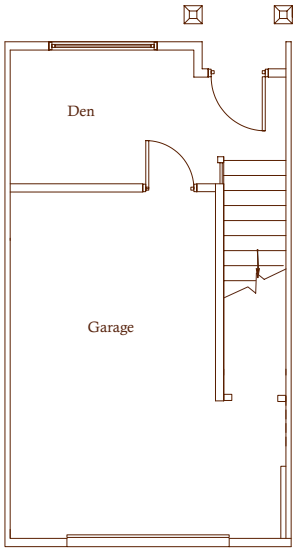


Developed by Ashbrook Townhomes, LLC. All elevations, floor plans, maps and other marketing materials are artists renderings and are not to scale. Ashbrook Townhomes, LLC reserves the right to change or modify all maps, plans, specifications, materials, features and colors without prior notice. Individual plans and square footage may vary according to elevation and orientation.

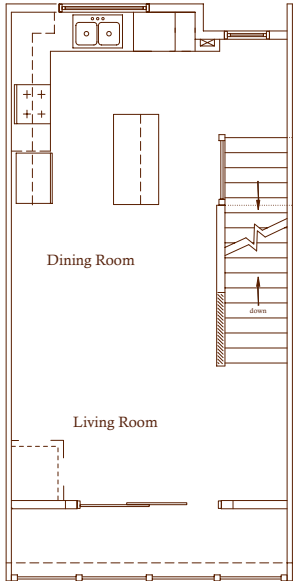
CCB#165960

Ashfield Floorplans

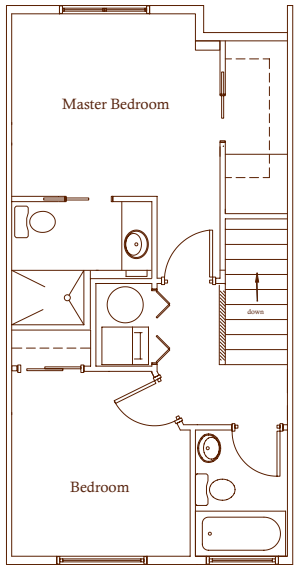
First Floor (151 SF)



Second Floor (441 SF)

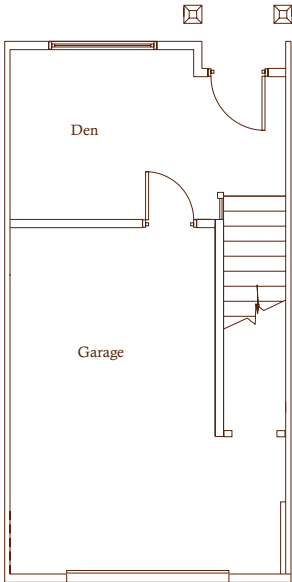


Third Floor (461 SF)

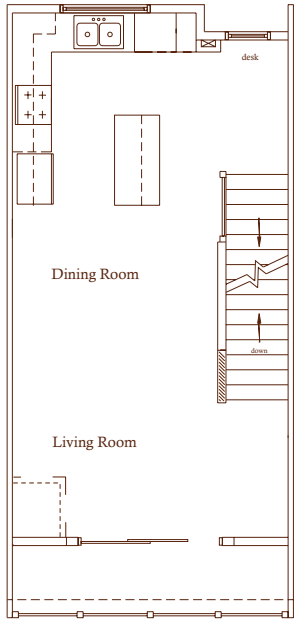


Brookfield Floorplans

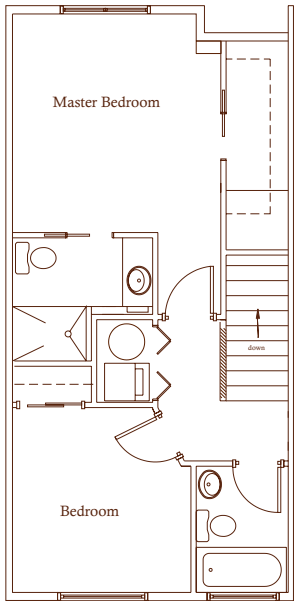
First Floor (188 SF)



Second Floor (473 SF)



Third Floor (493 SF)



Ashbrook
TOWNHOME CONDOMINIUMS

2 Bedrooms
2 bath

Dining Room
Living Room
Den
Garage